

Project partners:

EU Partners:



Nuertingen-Geislingen University (NGU), Germany –
Project coordinator
Swedish University of Agricultural Sciences (SLU),
Sweden
The University of Ljubljana (UL), Slovenia

UA academic partners orkshop:



Scientific and Methodological Centre for Higher and Pre-Higher Education (SMC HPHE), Ukraine
The National University of Life and Environmental Sciences of Ukraine (NUBiP of Ukraine)
Poltava State Agrarian University
Stepan Gzhytskyi National University of Veterinary Medicine and Biotechnologies Lviv
Volodymyr Dahl East Ukrainian National University

UA business partners:



Association of Milk Producers (AMP), Ukraine
Ukrainian Corporation for the Production of Meat on an Industrial Basis "Tvarinprom" (UC Tvarinprom)
Association of pig breeders of Ukraine (AUPB)

An associated partner:



Ministry of agrarian policy and food of Ukraine



SUSTAINABLE LIVESTOCK PRODUCTION AND ANIMAL WELFARE (SULawe)

N° 101083023 – SULawe –
ERASMUS-EDU-2022-CBHE
Capacity Building in the field of
Higher Education
(CBHE)
The project duration: 01.01.2023 –
01.12.2025



Co-funded by
the European Union

sulawe.org

Project coordination at the Nuertingen- Geislingen University (Germany):

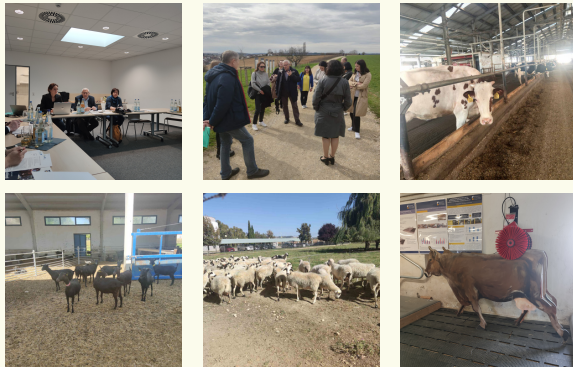
Prof. Dr. sc. agr. Heinrich
Schuele



Faculty of Agriculture, Economics and
Management
Institute for Farm Management
Phone. +49 7022 201480
e-mail: heinrich.schuele@hfwu.de

About the project:

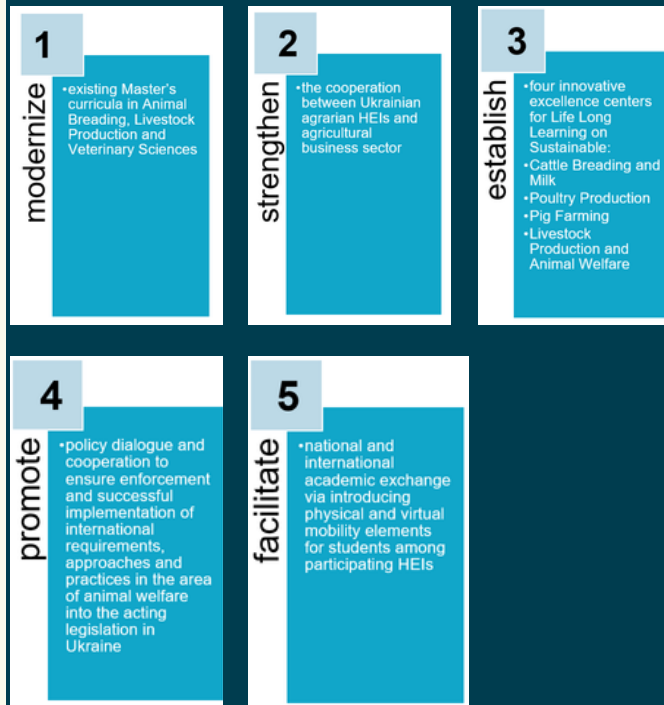
The project addresses the demand of educating professionals in Animal Breeding and Livestock Production on high quality and international standards to increase knowledge based solutions for sustainable agriculture, animal welfare and combating climate change impact by livestock sector towards achievement of climate neutrality as according to the European Green Deal 2050. Ukraine is one of the big livestock producers with a major focus on dairy cattle, pigs and poultry. In 2020 2477,5 thousand tons meat (in slaughter weight), 9263,6 thousand tons milk and 16167,2 million eggs have been produced. At 1st of January 2021 1673,0 thousand caws, 5876,2 thousand pigs and 200,7 million heads of poultry are kept. The livestock sector constitutes therefore – from one side – a large share of GDP and foresters economic development of the country, from another side – via emission of greenhouse gasses – it causes climate impacts, which are reaching wider beyond the national borders of the country. In addition, the issue of animal welfare is rather new. Despite growing attention to it from the policy (especially after Ukraine became a part of the Deep and Comprehensive Free Trade Area (DCFTA) in 2014), animal welfare principles are still rarely introduced into production practices on Ukrainian agricultural enterprises including farmers and households. Education is seen a key instrument to overcome this gap. Combination of innovative demand-driven and practice-oriented educational offer for young livestock and veterinary specialists along with an LLL offer for practicing livestock producers (agricultural enterprises and households) is seen a key to overcome the existing gap.



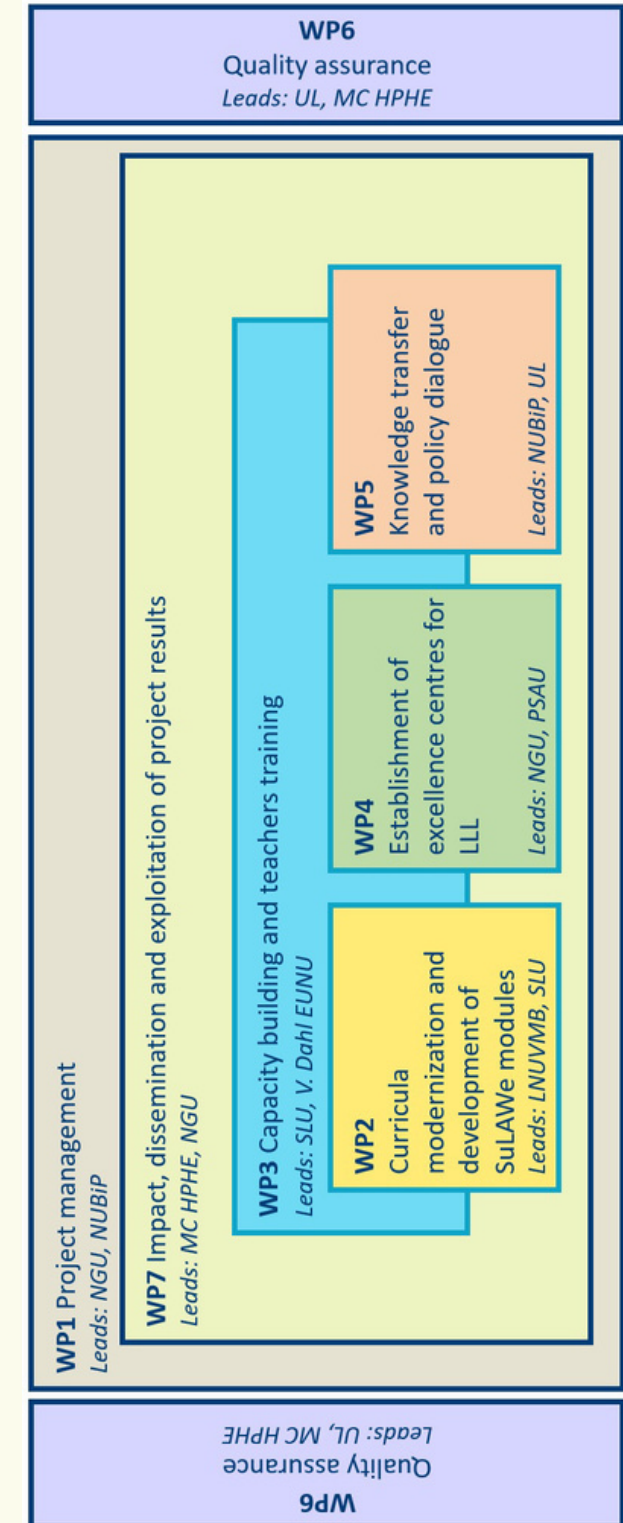
Project goals and objectives:

WIDER OBJECTIVE

To strengthen internationalisation of HEIs and capacity of young and senior professionals to tackle existing and future challenges in the area of sustainable livestock production and animal welfare via implementation of demand-driven and practice-oriented educational offer at HEIs in Ukraine, as well as via facilitated policy dialogue and structured knowledge transfer strategies.



Structure:



SULawe modules:

Project partners jointly will develop three Master's modules. These SULawe Modules will be introduced into existing curricula at four partner universities in Ukraine. The Modules will be jointly elaborated by inter-university working groups and include innovative contents for Sustainable Livestock Production and Animal Welfare, advanced didactic methods (student-centered and research-based learning) and practical training of students.

module 1

Module 1. Sustainable Livestock Production

1. Concepts of Sustainability, Sustainable Agricultural Production and Sustainable Livestock Management
2. Implications of Livestock Production, Health and Welfare on Biodiversity, Environment, Climate Change and Antimicrobial resistance
3. Innovative and sustainable technologies in animal husbandry production
4. Assessment of sustainability and sustainability criteria for livestock production
5. Livestock production, raw material and final products

module 2

Module 2. Animal Welfare

1. Animal welfare in livestock production (biological, physiological, ethological aspects)
2. National and international legal implications and restrictions regarding animal welfare
3. Modern and innovative methods/technologies for the increase and assessment of animal welfare in livestock production
4. Animal welfare in transport and trade of live animals

module 3

Module 3. Digital Livestock Farming

1. Introduction to Digital Livestock Farming – Overview, Definitions, System, Benefits
2. Technological Basics for Digital Agriculture and Smart Livestock Farming
3. Application of Digital Technologies in Livestock Production for increasing sustainability and animal welfare
4. Automation and Robotics in Livestock Production
5. Management Information Systems in Livestock Farming

4 LLL centers:

- LLL center for Sustainable Cattle Breeding and Milk Production at the S.Z. Gzytsky National University of Veterinary Medicine and Biotechnology of Lviv
- LLL center for Sustainable Poultry Farming was established at Poltava State Agrarian University
- LLL center on for Sustainable Pig Farming at the National University of life and environmental sciences of Ukraine.
- LLL center on for information and knowledge transfer on sustainable livestock production and animal welfare at Volodymyr Dahl East Ukrainian National University



SULawe Concept:

SULawe covers seven work packages, establishment of four innovative excellence centers, conduction of a number of project meetings and three thematic public conferences, policy recommendations for animal welfare and a series of capacity building measures as well as student mobilities during the implementation of the modernized study programs. SULawe methodology relies on interactive and participatory modernization of existing curricula in the area of animal sciences at the 4 partner universities in Ukraine. The analyses, pilots, reflections and further development both of the process and outputs are embedded into the process following the quality plan.

